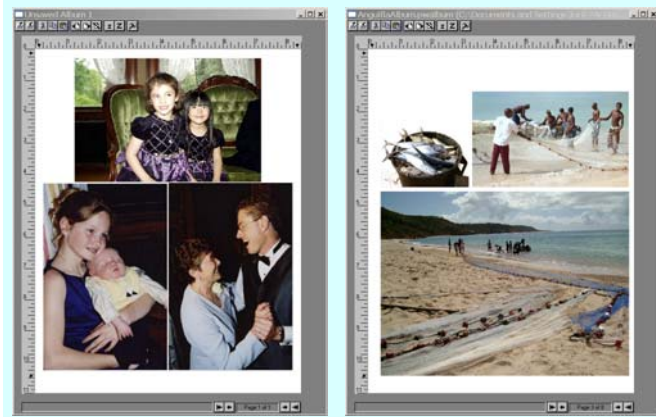


13. Albums & Multi-Image Printing



Two kinds of albums: At left we used automatic mode to print a collection of 4 x 6 images. Note that images are placed flush for easy cutout. At right we laid out images manually for best effect to create album pages.

The Album function is a flexible layout and printing tool that can be used in a number of ways:


- **Standard-size prints:** Automatically layout and print a whole collection of images in a single operation in a choice of standard sizes from full page sizes down to wallets and contact sheets. Images can be grouped flush with each other for easy cut out. Many standard forms (business cards, post cards) are also supported.
- **Album pages:** Manually place images onto album pages. The position, size, and crop them as desired. Use this mode to create photo essays and make album pages for a personal photo journal.
- **Printing:** Use the album function to to any open image as an alternative to the standard print function. It lets you layout images using mouse motions. You can also easily add images and print multiple pages.

Launching Album

There are two ways to launch the album function — from a Browse window and from the file menu. The first is most convenient for printing multiple images from the browser. The second is easiest if you want to print an image from the screen.

Creating An Album

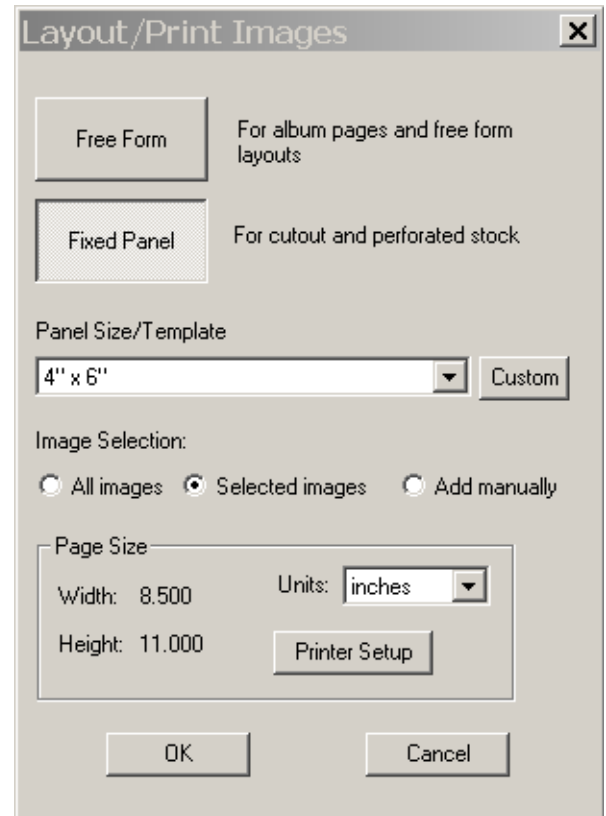
This section describes how to create an album from browse. This is most convenient when you want to include a collection of images. (To use album to print opened images directly, see [Print Album](#).)

1. Display the images you want to include in the **Browse** or **Search** window. (You will be able to add images later.)
2. Select images from the browse window, if desired.
3. In the Browse toolbar, click the  **Album Print** button. The Layout/Print Images dialog is displayed.
4. Select **Free Form** or **Fixed Panel** mode. Free form mode is used for manually adding and laying out images to create album pages. Fixed panel mode is used for automatic layout of standard sizes.
5. For fixed panel mode:

Select the **Panel Size** from the drop-down list. You can also create your own gridded panel layouts by selecting **Custom**. (See [Creating Custom Templates](#))

Check an **Image Selection** option. Regardless of your selection, you will be able to add and delete images later.

6. Click **Printer Setup** to set page size. (Note, in **free form** mode page size is fixed and cannot be changed later.)
7. Click **OK** to create an album. The album is either populated with selected images or is blank.



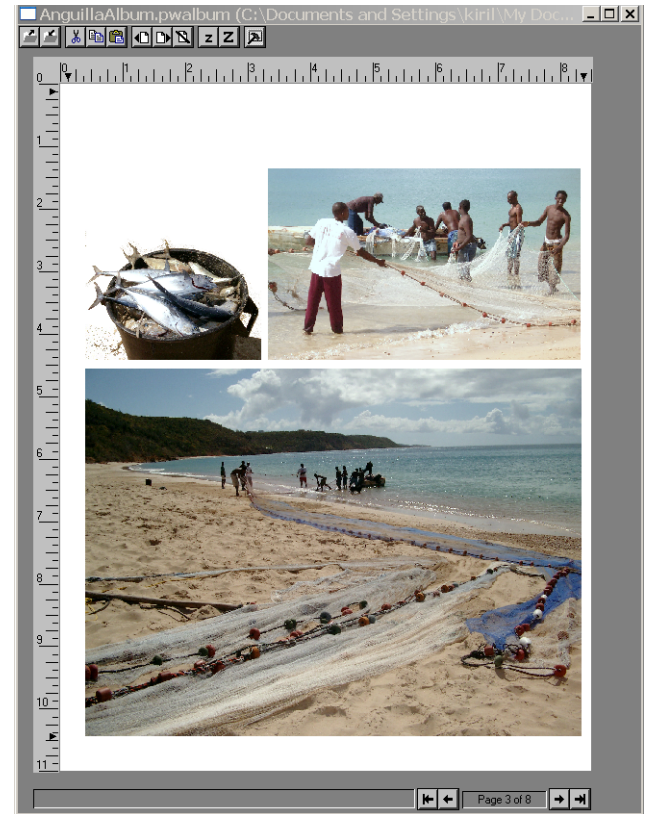
Album Display

The album window displays a single page. It shows the images just as they will appear when they are printed. It also has a:

- **Toolbar:** The toolbar has buttons for opening and saving albums, clipboard functions, adding and deleting pages, zooming the image and displaying the album property dialog.
- **Status display:** The status display shows the filename and size of the image under the cursor.
- **Page buttons:** Buttons below the album page navigate to the first, previous, next, and last pages.
- **Rulers and Margins:** Rulers show the dimensions of the page and positions of all the elements on it. Little black triangles in the rulers control the usable area on the page.

In **Fixed Panel** mode changing margin settings forces a repositioning of the image panels and may even change the number of panels that fit on the page. (Template layouts are fixed on the page and do not have margins.)

In **Free Form** mode, any part of an image that extends into the margin area is cropped. Unlike Fixed Panel mode, adjusting margins in Free form mode does not reposition the images or affect the layout of images on the page.



Working with Images

The Album has been designed to let you work with images easily and naturally. Adjustments to all aspects of an image — its placement, size, cropping, and magnification within the frame — can be made interactively with the mouse. Because of the dynamic nature of these operations, they are hard to describe in words. So by all means, create an album and try the operations as you read about them. You will be glad you did.

You can adjust images by using the mouse and from the panel menu. (See [Panel \(Right-click\) Menu](#))

Using the Mouse

Selection: To select an image, simply click on it. This causes eight handles to be displayed — four in the corners and four in the centers of each edge. For some operations, more than one image must be selected. You can select additional images by Shift-clicking on them. Note that the handles are black on the first image selected and white on additional images. The black handles indicate the reference image in alignment operations. During alignment operations, the reference image stays still while other images are aligned against it.

Image Size: Drag the image by a corner handle to make it larger or smaller. The image is resized so that its proportions are maintained. **Cursor style: double arrow**

If you want the corner of the image to track the cursor exactly, hold down the shift key while dragging. This lets you vary the proportions of the image as you are resizing it.

Cropping: To crop an image, drag the middle handles. Notice that the full image is displayed as drag, so you can make a better composition choice. (Hold down the shift key to disable the full image display.) **Cursor style: double arrow**

Notice that the middle handles are either square or triangular. A triangular handle indicates that the image is

cropped and that there is more image beyond the edge. When the handle is square there is no more image beyond the edge.

Zooming: You can zoom the image in and out within its rectangle. Place your mouse on the point you want to fix as you zoom and turn the mouse wheel to zoom. (Some mouse drivers restrict the mouse wheel to scrolling only. In that case use either the up and down cursor keys or the zoom buttons in the album toolbar.)

Panning: If the image is cropped, you can pan it within the displayed rectangle. To pan, just click in the center of the image and drag to pan. **Cursor style: hand**

Note: In **fixed panel** mode it is possible to move the image off the panel. However if you subsequently add or delete images ahead of this image, automatic repositioning may create an undesirable result. Thus it is recommended that you keep the image within the panel.

Positioning: To position the image on the page, place the mouse *between* handles near any edge and drag. This moves the entire image on the page without affecting size or cropping. **Cursor style: four-headed arrow**

Editing the image: If you want to edit the image using any of Picture Window's transformations or free-hand tools, double-click on the image. It will be opened in an image window. Make your edits. In most cases, when you return to the album you will be given the option to swap the image with the new edited version.

If the change is not detected automatically, you can refresh the album image manually. Right-click on the image and select **Refresh** from the menu.

Note: You must save all edited images, before you can save the album. If an image is not saved, you will be prompted to save it.

Panel (Right-click) Menu

The panel menu sets various panel parameters. In general, select the panel (or panels) you want to adjust first and then right click on the selected panel to display the menu.

Placement: Displays a sub-menu to crop, adjust drawing order (front or back) and reapply default album defaults for the image.

Align Images: Aligns images with each other or with the page.

Rotation: Rotates the image to any of the four 90 degree orientations. In **fixed panel** mode You can also select **Best Fit** to rotate the image for best fit in relation to panel orientation. Once you rotate an image, it is protected from any change made globally in the Property Dialog. To reset it to album defaults, use the **Placement** menu.

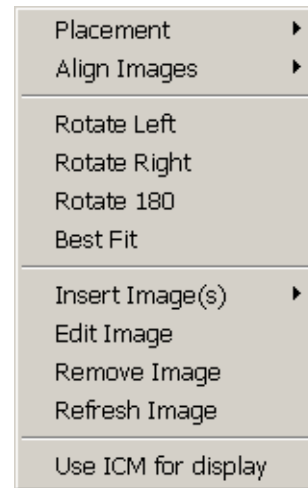
Insert Image(s): You can insert images from the disk or images open in Picture Window. The images are inserted to the current page. In **fixed panel** mode, images after the insertion are moved forward and new pages are created as needed. In **free form** mode, images are inserted on the current page. Existing images are not affected.

Edit Image: Opens the selected image in an image window. You can edit the image using any PWP transformation or free-hand tool. When you return to the album, you will be given the option to replace the current image with the latest edited version. (For changes made in place, you must manually use the **Refresh Image** function.)

Remove Image: Removes the image from the album

Refresh Image: Forces a refresh of the image. Use this to reread after a file error or after in-place editing.

Use ICM for display: (*Picture Window Pro only*.) When checked, a color profile is applied in displaying album pages. Since



you are not making color judgements based on the album display, you may want to uncheck this item for faster image display. This setting has no affect on printing.

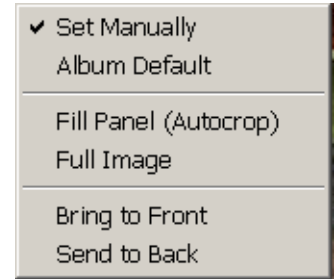
Placement

To display this sub-menu, select a panel and then right-click and select **Placement** from the **Panel** menu.

Set Manually/Album Default: Chooses whether image rotation and cropping is determined by general album settings or are overridden for this image.

Autocrop/Full Image: Either fills the entire panel, cropping the image as needed, or displays the full image with no cropping.

Bring to Front/Send to Back: Determines the Z-order of the image. This function is intended for use in **free form** mode albums. In **fixed panel** mode images should normally not exceed panel boundaries, making this function unnecessary. If this function is used in a **fixed panel** album, avoid image insertion or deletion as automatic reformatting may lead to unexpected results.



Align Images

There are two sets of alignment functions — alignment of images with respect to each other and alignment with respect to the page inter-margin area. This function applies to **free form** mode only.

To align images with respect to each other, select the reference image first, then shift-click on the other images. Alignment is performed relative to the reference image (black handles).

To align images with respect to the page, select one or more images in any order. All selected images are treated as one group in calculating the alignment.

Toolbar

File Functions



Open Album. Displays the standard Windows file dialog so you can open a previously saved album. You can perform the same operation using **File/Open**.



Save Album. Lets you save the current album under its current file name. (Equivalent to File/Save) Images are linked rather than copied into the album. If any images used by the album are not saved, you will be prompted to save them first. If you move the album file, make sure to move the images as well. The standard extension of Picture Window albums is *.pwalbum*.

Clipboard Functions



Cut. Saves the currently selected image to the clipboard and then deletes it from the album.



Copy. Copies the currently selected image to the clipboard. The image in the album is not affected.



Paste. Pastes the image into the album. If an image is selected, you have the option of replacing the selected image or of just inserting the new image on the page. If the image has been copied from an album with the same panel size, cropping and magnification is preserved.


Page Functions




Add Page: Adds a new blank page before or after the current page. In Fixed Panel mode a new page cannot be added at the end. (This is because empty trailing pages are automatically removed.)



Delete page(s): Deletes a page or range of pages. All images on the pages are removed from the album.

 **Zoom:** Zooms the selected image in or out. You can also zoom the image with the mouse wheel or up and down cursor keys.

 **Display Album Property Dialog:** Displays the property dialog. This dialog lets you change layout parameters and print the album. You can close the dialog when you are not using it and display it easily when you need it again.

Property Dialog

The property dialog controls layout parameters and is used to print the album.

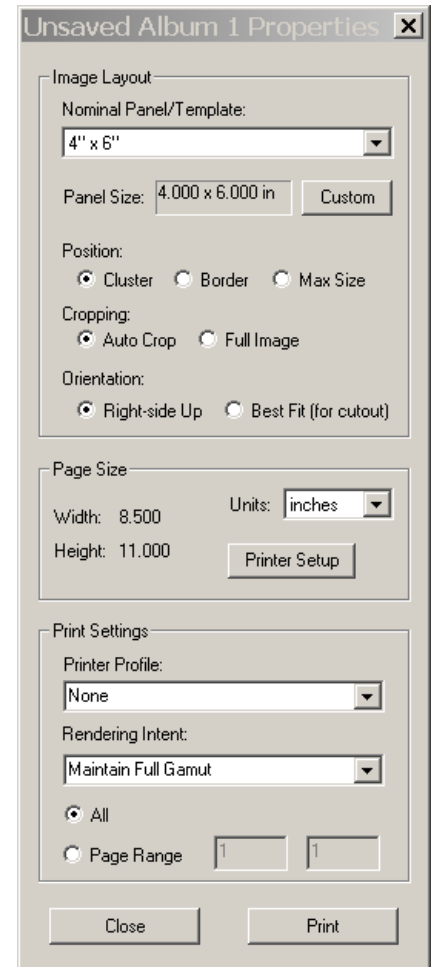
Image Layout

Nominal Panel/Template: In **fixed panel** mode, sets the nominal size of the panel. (If **Max Size** is set, the panel may be larger than the nominal size.) The actual panel size is shown in the window below. Picture Window uses the panel size to determine how many panels fit between margins on the page. To convert an album to **free form**, select **Manual**.

Custom: Creates a custom layout. (See [Creating Custom Templates](#))

Position: Determines how the panels are arranged on the page. **Cluster** places them flush against each other for most efficient cutting. **Border** centers each panel within its area of the page, creating a border around each image. **Max Size** makes the panel as large as possible, filling out the available space.

Fixed Panel mode only.



Cropping: Determines whether the image is cropped to fill the panel or made as large as possible without cropping. In either case you use image controls to adjust cropping, panning, size, and position. **Fixed Panel** mode only.

Orientation: Sets the orientation of the image relative to the page or the panel. If you intend to cutout the images, use **best fit**. If you are going to use the page as is, select **right-side up**. (Of course if the image orientation in the file is wrong, you will have to rotate the image manually to make it right side up.) **Fixed Panel** mode only.

Page Size

Width & Height: The page size currently set in the printer. Use **Printer Setup** to select printer parameters.

Units: Select English or metric units. The standard panel sizes are slightly different in the two systems.

Print Settings

Color Management Settings: (*Picture Window Pro only.*) If Color Management is enabled and you are printing a color image, two additional controls are displayed in the print dialog for setting color management options.

Custom Profile: Choose the printer profile appropriate for your printer and paper you are using.

Rendering Intent: The rendering intent controls how colors are translated from their current color profile to the printer's profile. The default setting, **Maintain Full Gamut**, translates by making the best use of the full range of colors available on the printer. It is the best choice for most pictorial purposes. **Preserve Saturation** matches color saturation when possible even if that introduces some inaccuracy in hue and brightness. **Preserve Identical Colors** and their White Point and Black Point variants favor color accuracy over making the best use of the available gamut. Use this setting for cases where absolute color matching is most important.

Page Range: Sets the range of pages to be printed.

Close the dialog: Click **close** to close the dialog at any time. (Settings are not affected). Reopen it from the album toolbar.

Creating Custom Templates

You can create your own gridded templates. These templates can be used with perforated stock (such as business cards and labels) or to simply create your own layouts.

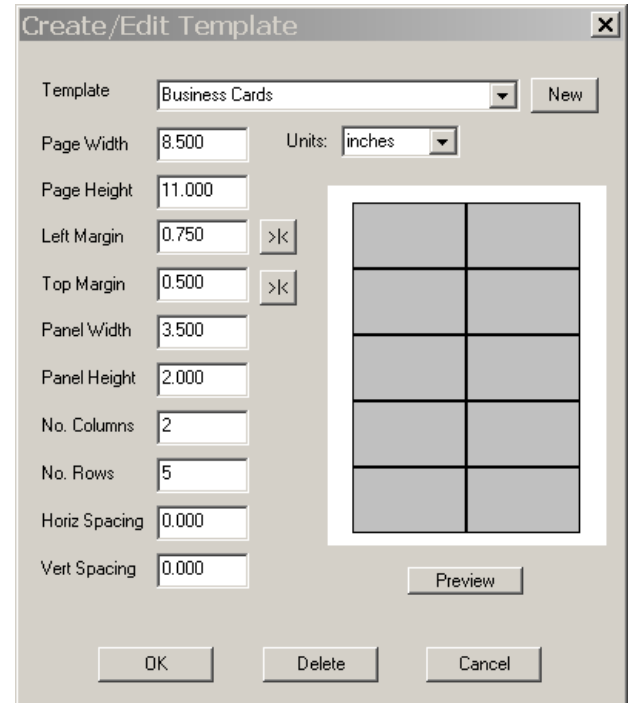
Templates are specified using the following parameters:

- Panel dimensions
- Spacing between panels
- Number of panel rows and columns
- Page size and left and top margins

In addition, templates have names. Names do not absolutely have to be unique, though it is good practice.

To create a new template or edit/delete an existing one:

1. Display the Template dialog. On the **Album Properties** dialog click **Custom**.
2. To edit a template, choose it from the list of templates. To create a new template, click **New** and assign it a name.
3. Set the template parameters as required. Use the >|< buttons next to the margin controls to center the panels on the page. Use the **Preview** button to refresh the display.
4. Click **OK** to apply your edits, **Delete** to delete the selected template, or **Cancel** to back out of the changes.



How templates are stored

All template specifications are stored in a single file called **PWTemplates.txt** in the folder of the Picture Window executable. The file is updated with any changes made during a Picture Window session when PW is shutdown. Changes include edits, additions, and deletions made in the Template dialog. Also, new templates found when an album file is opened are also automatically added to the template file.